

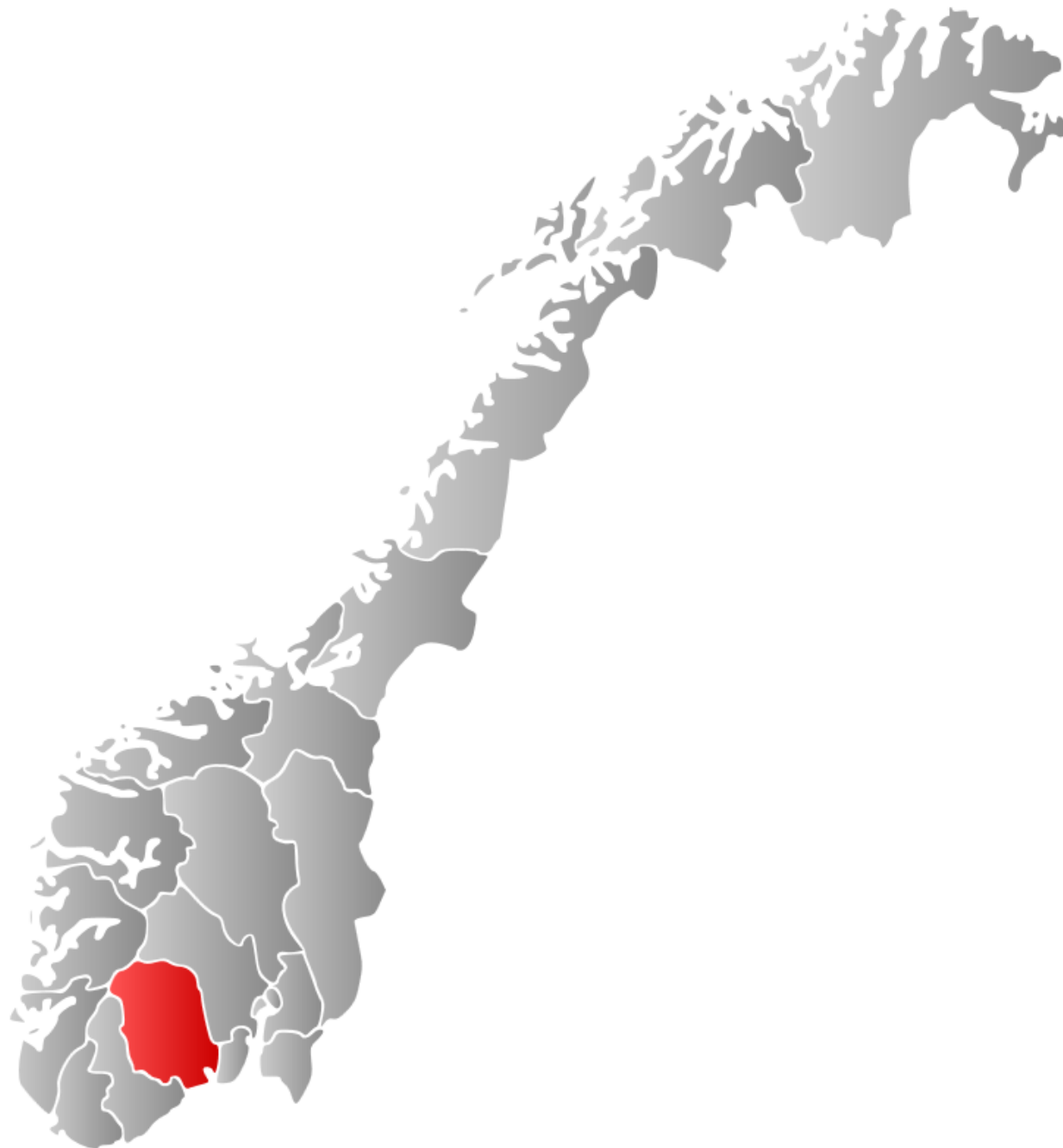


«Risk management of blackout due to difficult weather including extreme winter conditions»

Kari Nordheim-Larsen
County Governor
Telemark, Norway



Fylkesmannen i
Telemark



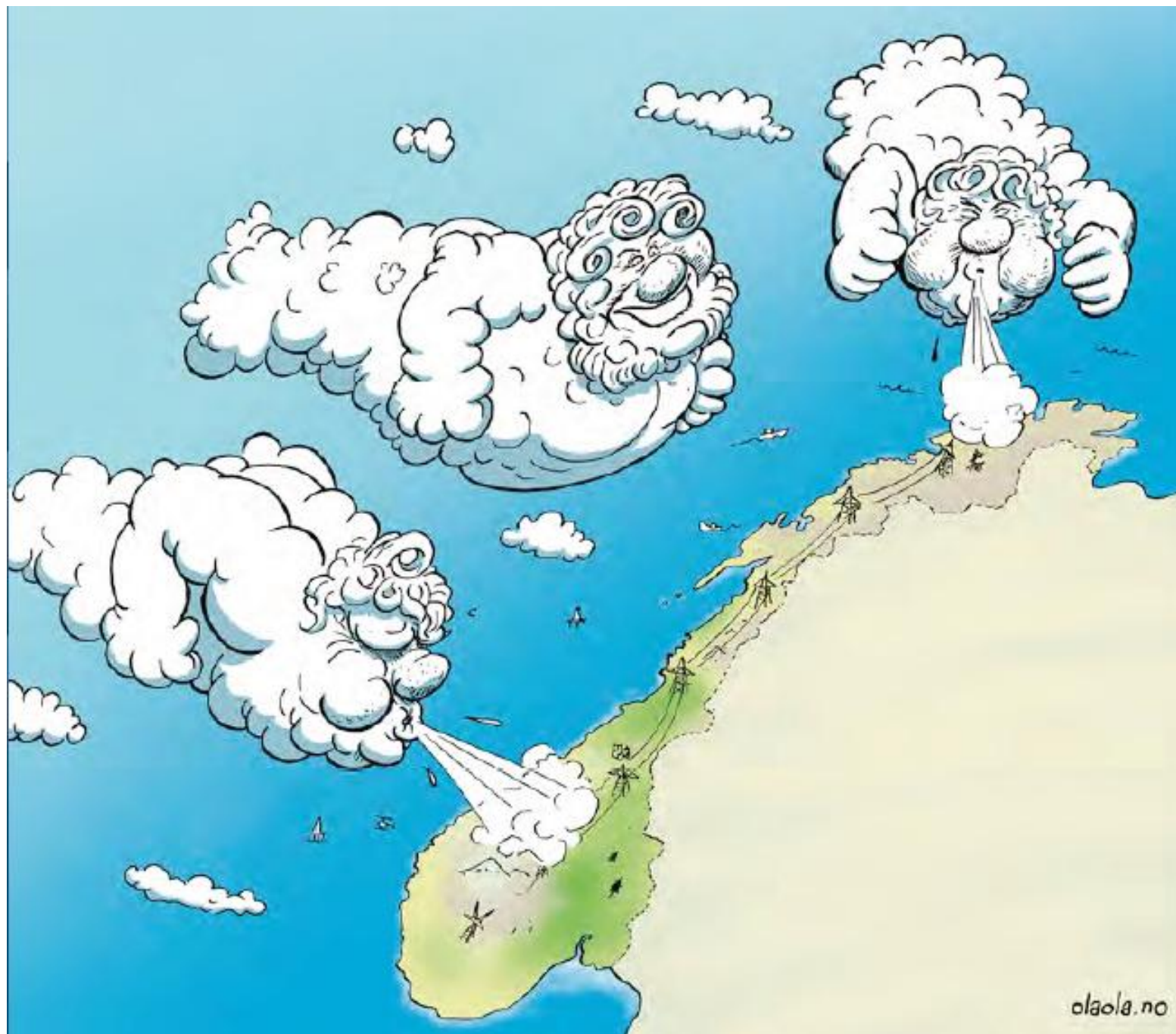


Fylkesmannen i
Telemark





Fylkesmannen i
Telemark



olaola.no



Photo: Statnett





Fylkesmannen i
Telemark



VOSS 1961

300kg/m





Fylkesmannen i
Telemark

Ready for repair
efforts in harsh
winter conditions





Fylkesmannen i
Telemark

Regional Risk- and Vulnerability Analysis



Fylkesmannen i
Telemark



Fylkes-ROS



Risiko- og sårbarhetsanalyse
for Telemark





Fylkesmannen i
Telemark

Regional plan for improving Societal safety and Emergency preparedness



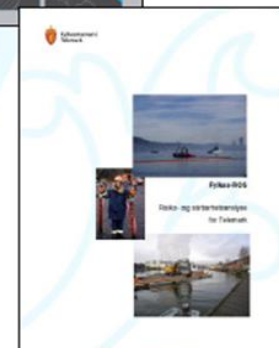
Fylkesmannen i
Telemark



Handlingsplan

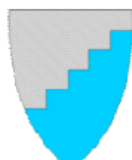
2013-2016

Fylkes-ROS for Telemark





Fylkesmannen i
Telemark





The role of the State Territorial Representative during a black-out

- **Support the municipalities with their requirements and forward their requests for additional assets**
- **Support the regional emergency power supply organization as required**
- **Coordinate and prioritize (when necessary and within the Regional Council) the use of regional assets such as for example back-up generators**
- **Send status reports and forward requests for support to the national level**
- **Make use of regional and local TV and radio stations (including taking over editorial responsibility when required) to distribute information to the population**



Fylkesmannen i
Telemark





Fylkesmannen i
Telemark





Fylkesmannen i
Telemark

