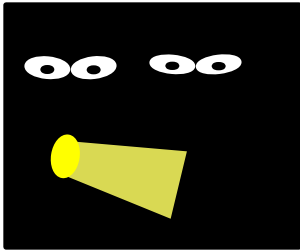


Power failure Germany 2006

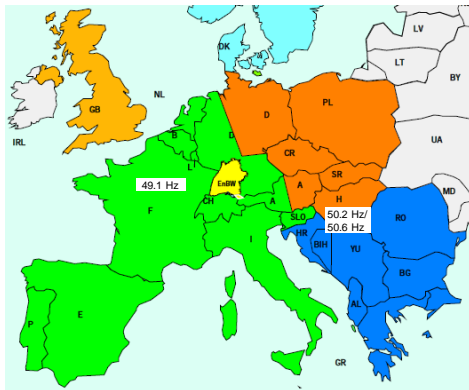
Knowledge gained - consequences



Incident occurring 4th November 2006, 22:10 hrs

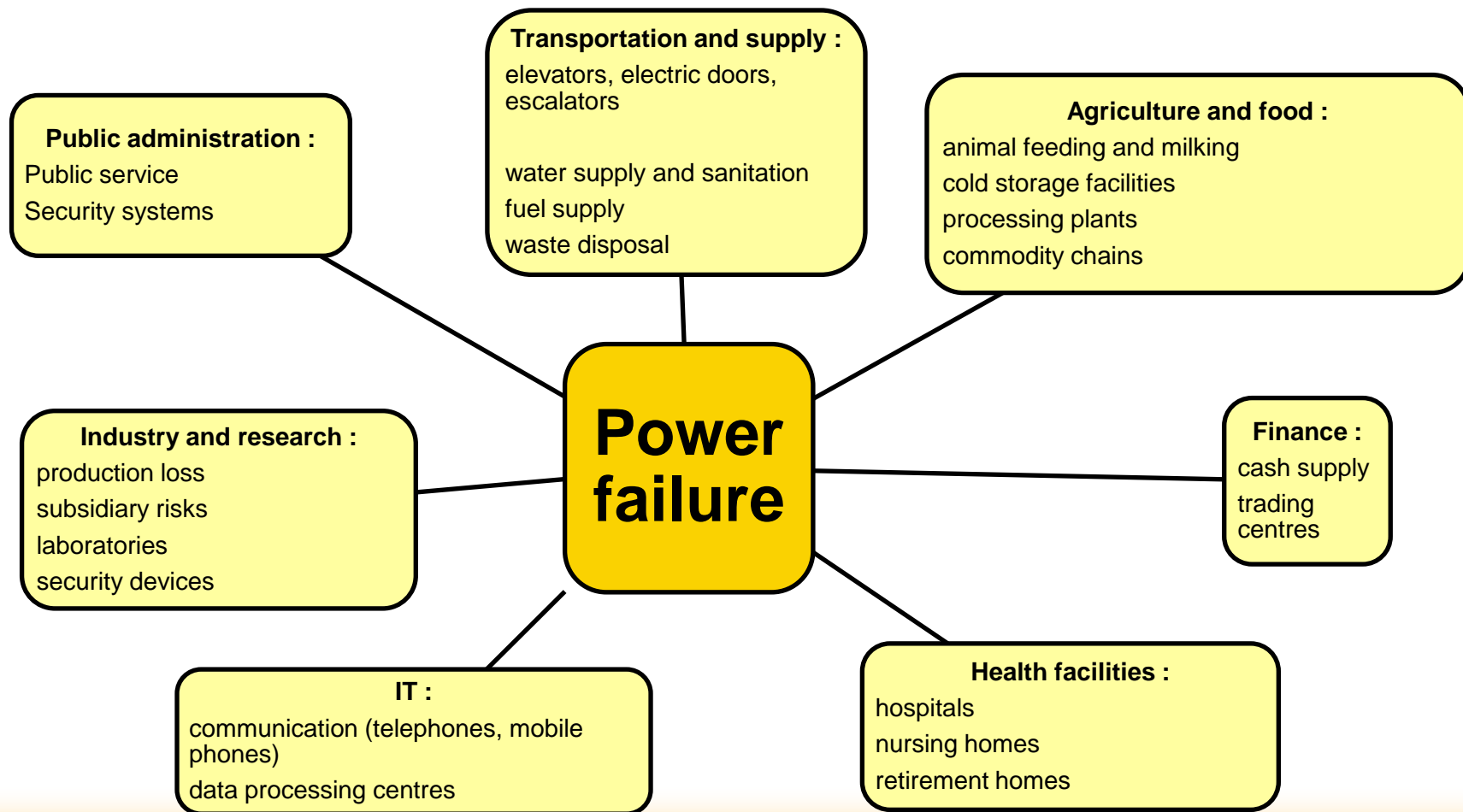


- Shutdown manoeuvre in Germany
 - ➔ Power failure across Europe
- Approx. 15 million people affected
- The Federal Agency for Regulation of the Energy Supply Network investigates the incident



Quelle: EnBW Transportnetze AG

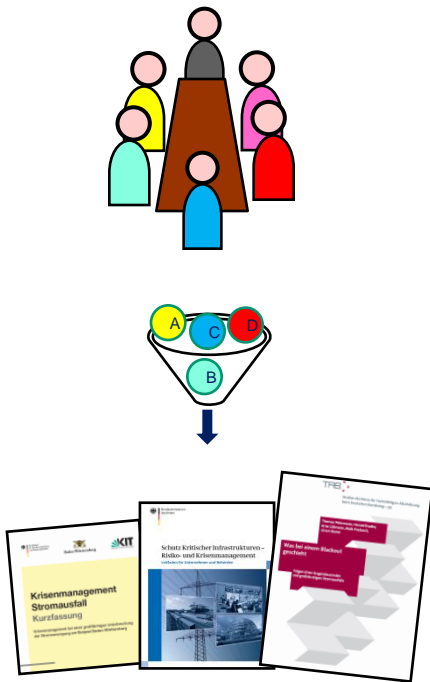
Areas affected by power failure



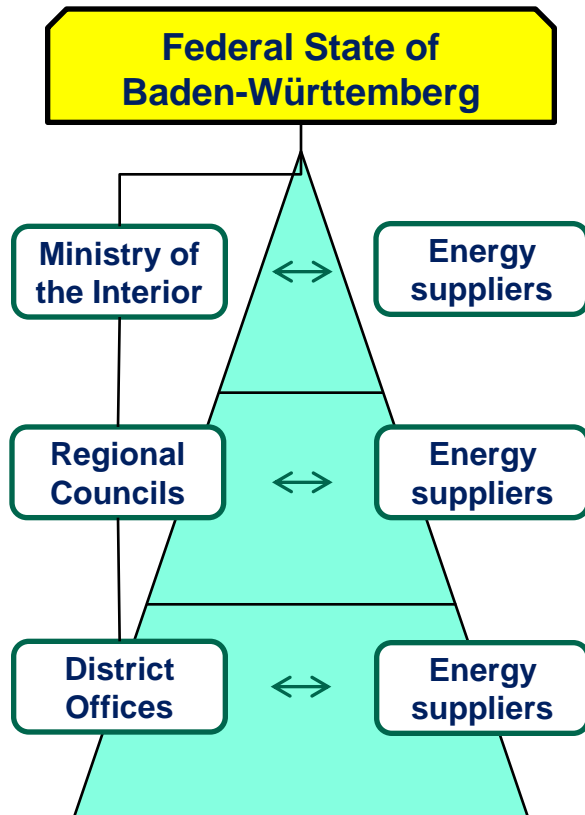
Power failure Germany 2006

Subsequent measures

- Federal Office of Civil Protection and Disaster Assistance
 - ➔ Interdisciplinary research projects and risk analyses
 - ➔ Prevention catalogues for authorities, the economy and the general population



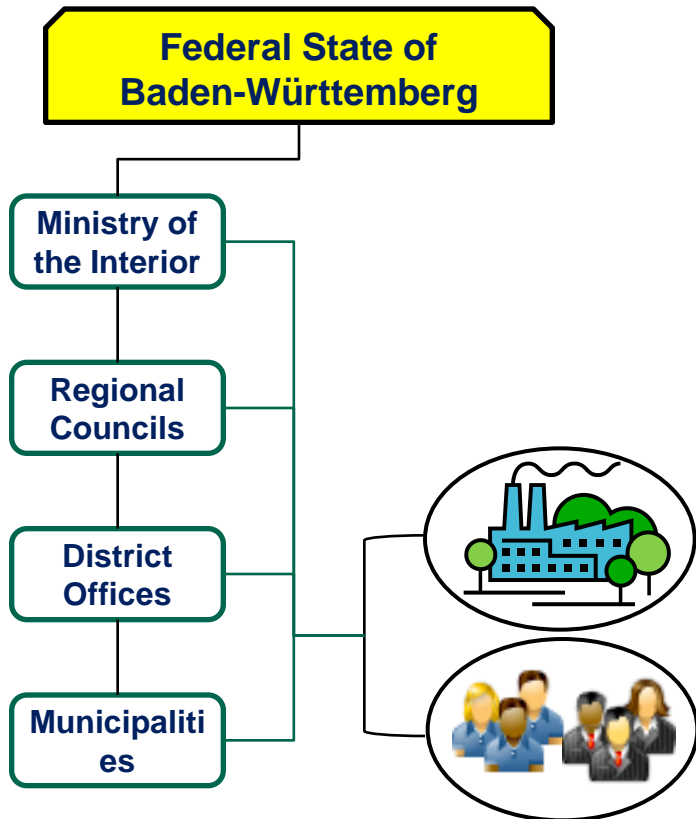
Power failure Germany 2006



Subsequent measures

- Emergency response authorities and energy suppliers
- ➔ Mutual notification on crisis management
- ➔ Collaborative exercises

Power failure Germany 2006



Subsequent measures

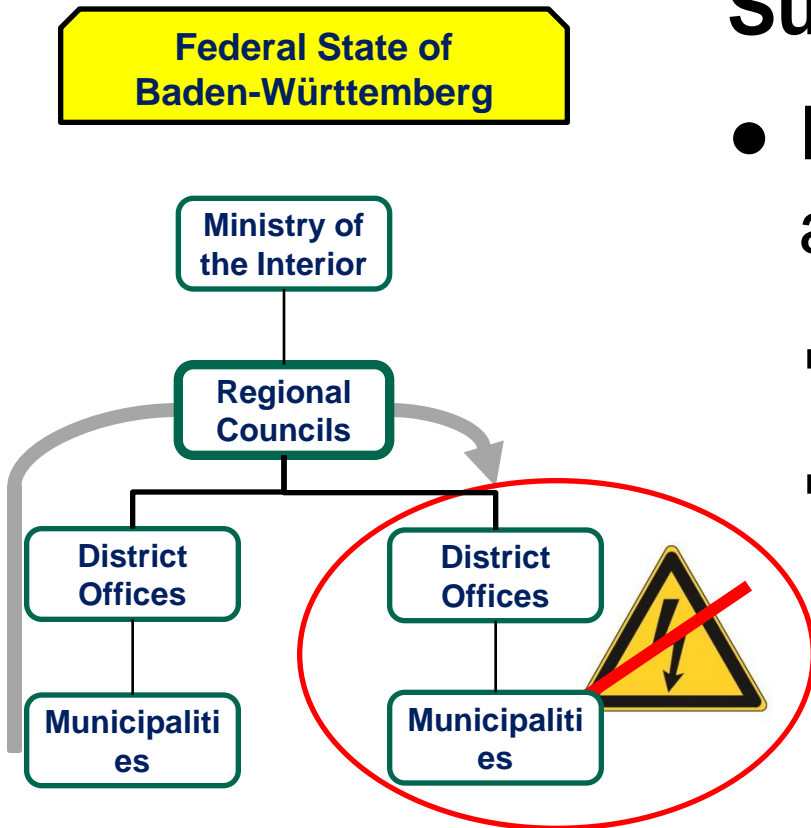
- Emergency response authorities
 - ➔ Ensure own capabilities for action
 - ➔ Raise awareness of self-help options for consumers

Power failure Germany 2006



Subsequent measures

- Emergency response authorities
 - ➔ Communications failure
 - ➔ External control of assistance



Power failure Germany 2006



First actions on power failure

- District Offices

- ➔ Activate all fire brigade personnel = emergency notification office
- ➔ Appoint contact person for energy suppliers in the crisis team

- Regional Councils

- ➔ Activate civil protection forces from distant administrative districts

