

Mapping risks across borders

*Prof. dr. Wim van de Donk
Governor of North-Brabant*

Why a risk map?

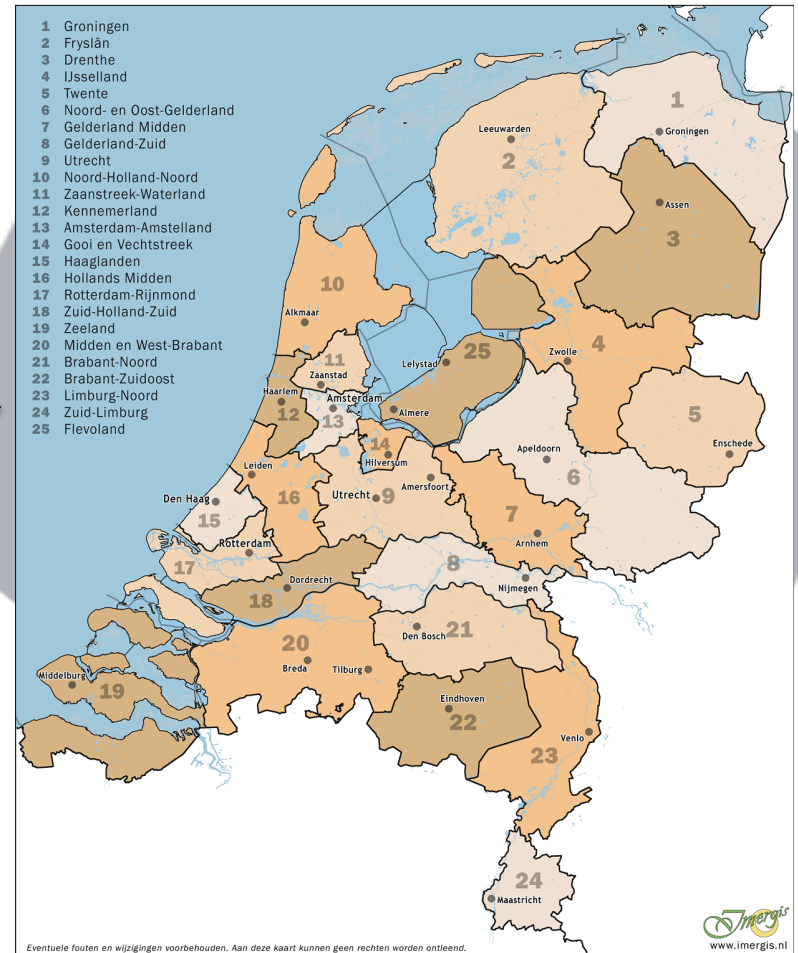
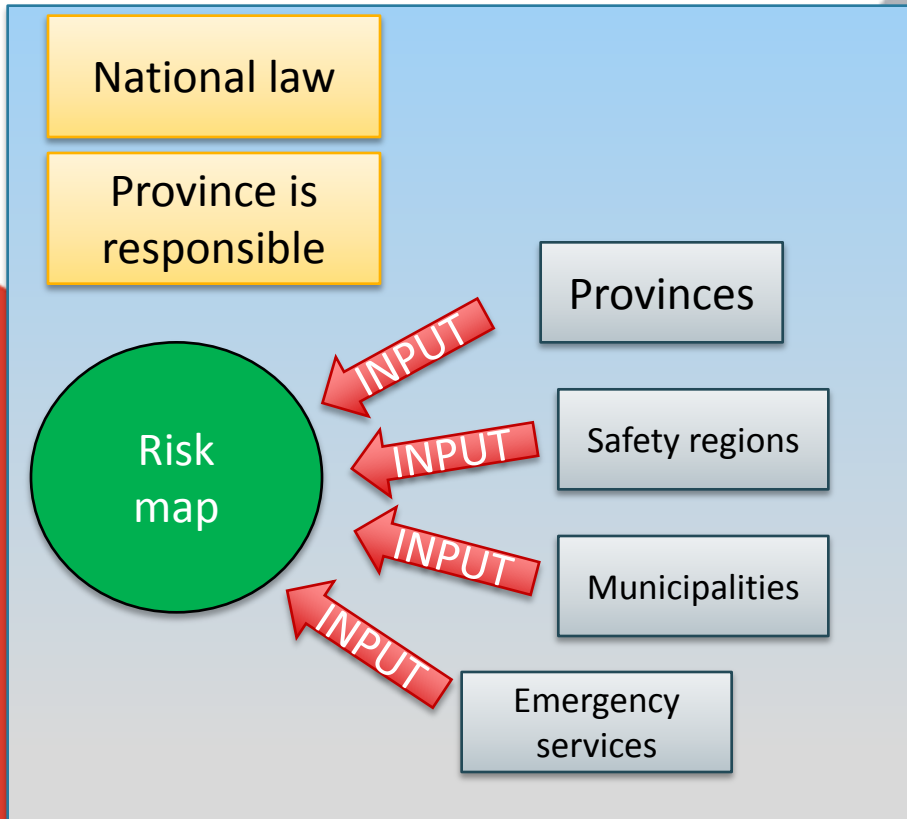


Explosions at a firework plant in Enschede in 2000

Aim of the risk map: to make risk information complete, accessible and transparent.

Safety and government in the Netherlands

- national government
- 12 provinces
- 25 safety regions



The risk map

nederland.risicokaart.nl/?ext=38427.49,385305.17,38427.49,385305.17

Applicaties Instellingen



Risicokaart

Risks concerning flood risks (medium-risk areas (red & green) and points of special interest (blue))

Interprovinciaal Overleg

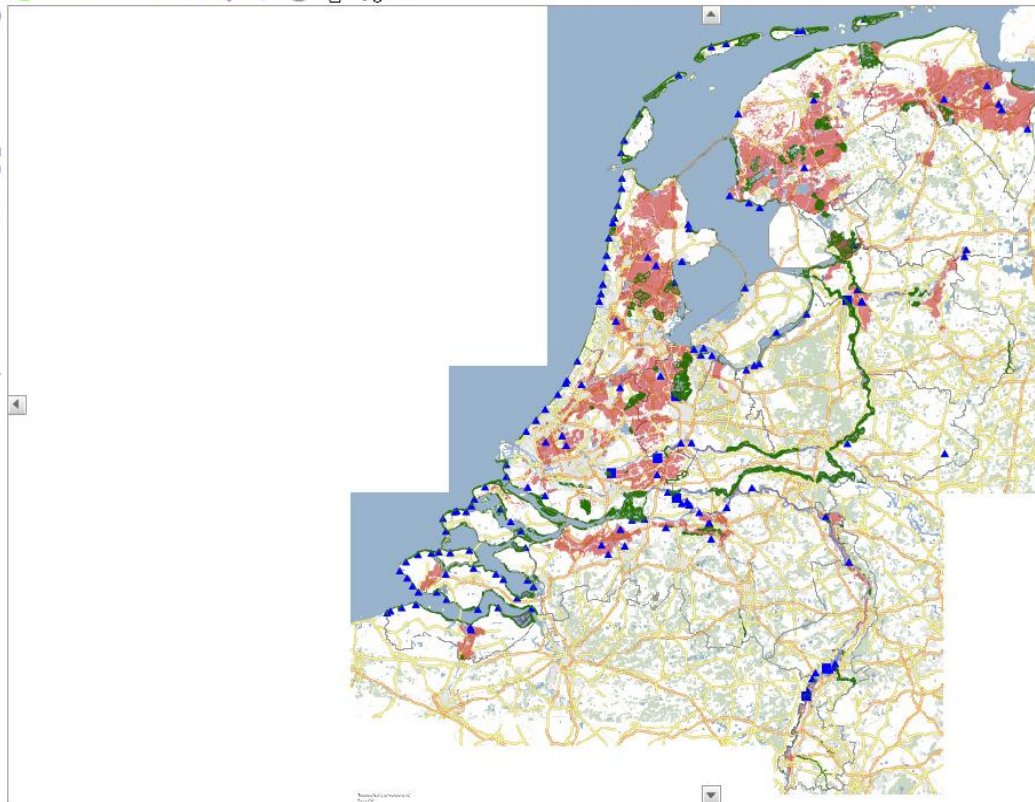
[Explanation](#) | [Contact](#) | [Help](#)



selecteer een zoekingang...

- Search the entire file
- Search within the map image

Drawing and measuring



Select a theme...

- Defence zone
- Accident involving hazardous substances
 - Establishments
 - Transport
 - Road
 - Rail
 - Water
 - Pipeline
 - Accidents
- Natural disasters
 - Overstromingen
 - Grote kans
 - Omvang van de overstroming
 - onbeschermd
 - beschermd
 - Middelgrote kans
 - Maximale waterdiepte
 - Potentieel getroffen gebied
 - Landgebruik
 - IPPC-bedrijven
 - Kwetsbare gebieden
 - drinkwaterlocaties
 - overwaterlocaties
 - recreatiegebieden
 - Kleine kans
 - Omvang van de overstroming
 - Maximale waterdiepte
 - Maximale stroomsnelheid
 - Potentieel getroffen gebied
 - Landgebruik

0 80 km

Surface transparency composition

The risk map shows statutory public about risks. [Click here](#) for more information.

The risk map

nederland.risicokaart.nl/?ext=38427.49,385305.17,38427.49,385305.17

Applicaties Instellingen

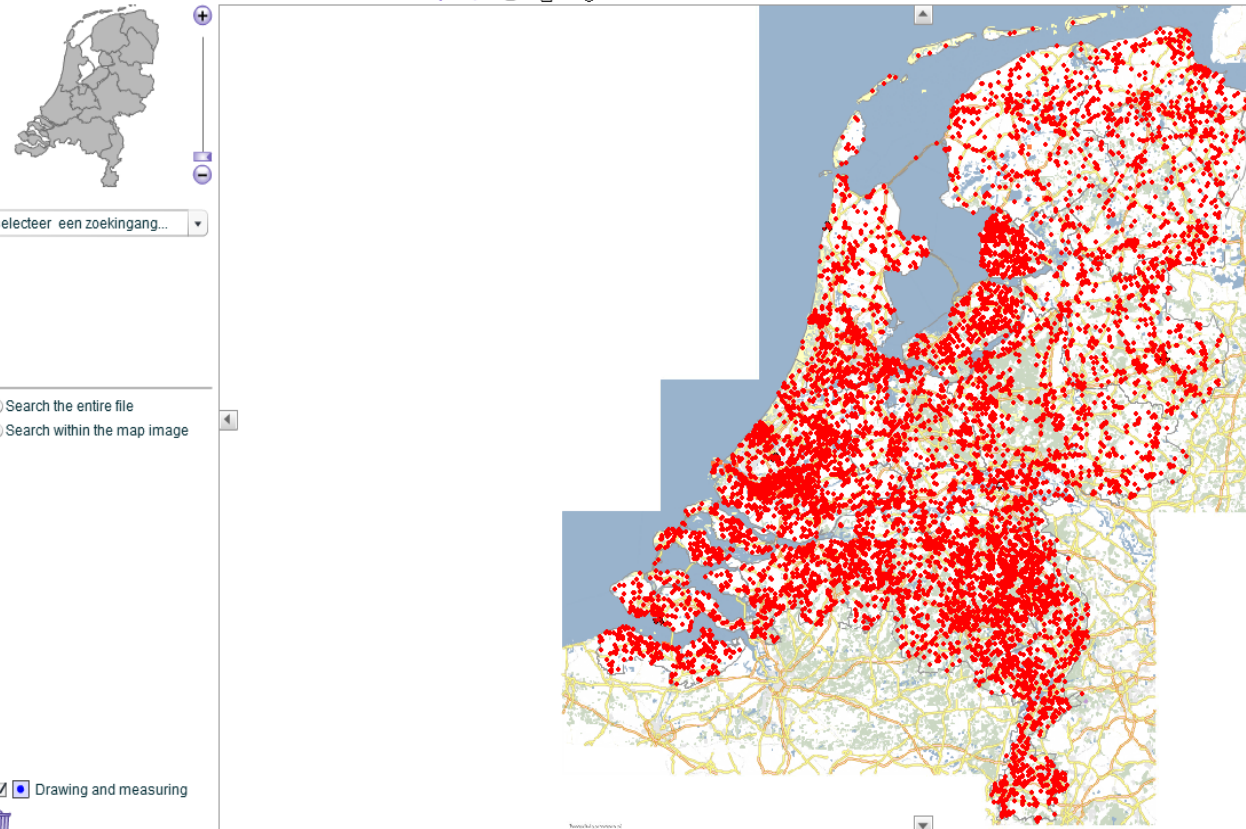


Risicokaart

Risks concerning hazardous substances

Interprovinciaal Overleg ip

[Explanation](#) | [Contact](#) | [Help](#)



Select a theme...

- Site boundary
- Transport
 - Road
 - Rail
 - Water
 - Pipeline
- Accidents
 - Aviation accident
 - Accident on the water
 - Accident on land
 - Accident in tunnel
- Natural disasters
 - Overstromingen
 - Grote kans
 - Middelgrote kans
 - Kleine kans
 - Omvang van de ov
 - Maximale waterdie
 - Maximale waterdie
 - Maximale strooms
 - Landgebruik
 - IPPC-bedrijven
 - Kwetsbare gebied
 - Waterkeringen
- Natural fire
- Earthquake

- Mass panic/ violation of public order
- Vulnerable facilities
- Boundaries and population
- Base map

The risk map shows statutory public about risks. [Click here](#) for more information.

Surface transparency composition

The risk map



Zooming in: nucleair risk in Borssele (province of Zeeland)



[Explanation](#) | [Contact](#) | [Help](#)

selecteer een zoekingang...

Search the entire file
 Search within the map image

Drawing and measuring

x:38922 y:383777 600 m

Surface transparency composition

identify

Nuclear establishment

Place	Borssele
Municipality	Borssele
Competent authority	I&M
Name of establishment	Kerncentrale Borssele
Address	Zeedijk
House number	32
BAG-id	065401000000380
Environmental permit	Kew-vergunning E/EE/KK/99004681
Date of amendment	12-03-2008
Date of autorisation	21-03-2008
Report	Click here...

More information: [Click here](#)

Site boundary

Place	Borssele
Municipality	Borssele
Competent authority	I&M

Site boundary

- Transport
 - Road
 - Rail
 - Water
 - Pipeline
- Accidents
- Natural disasters
- Mass panic/ violation of public order
- Vulnerable facilities

The risk map shows statutory public about risks. [Click here](#) for more information.

The risk map



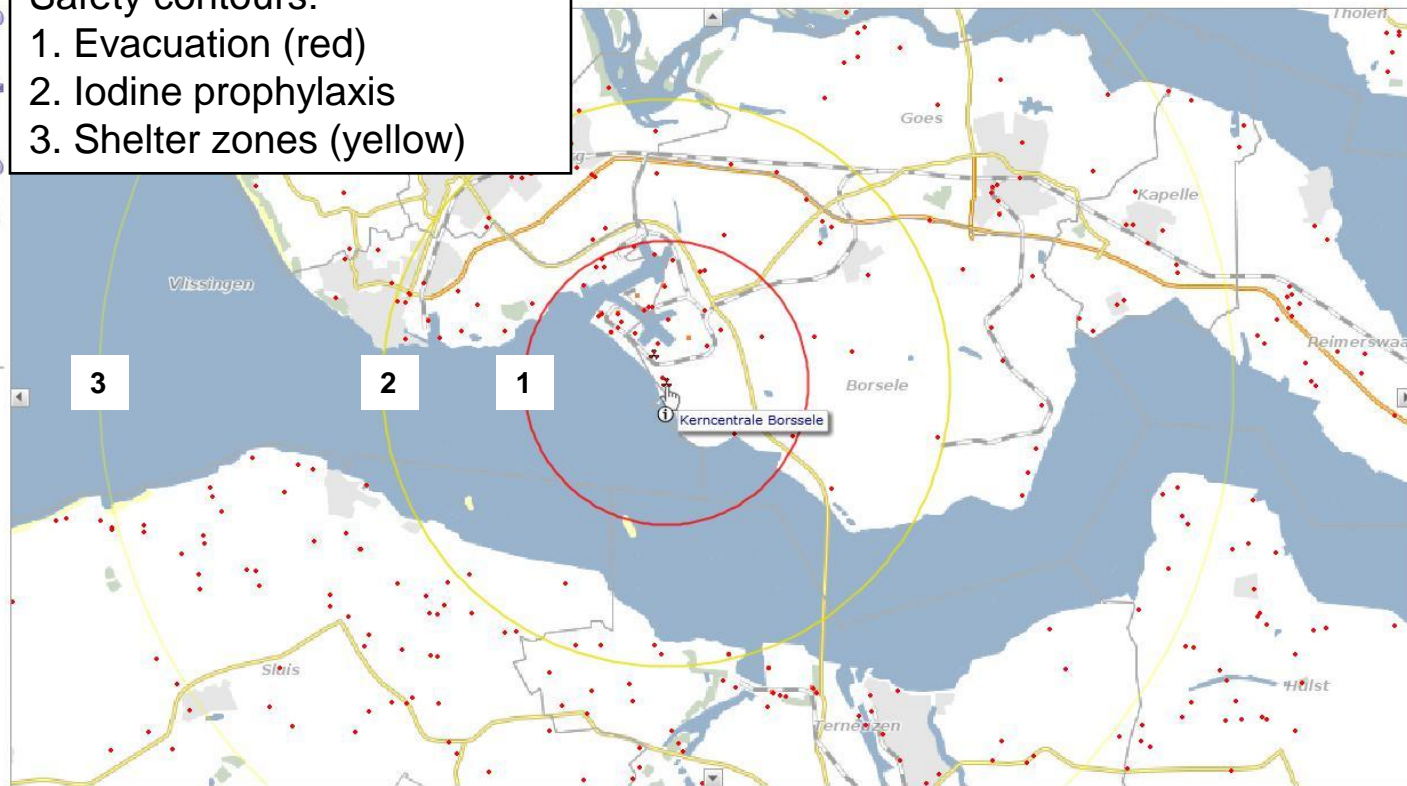
Risicokaart

Interprovinciaal Overleg **ip**^o

[Explanation](#) | [Contact](#) | [Help](#)

Safety contours:

1. Evacuation (red)
2. Iodine prophylaxis
3. Shelter zones (yellow)



Select a theme...

- Risks and effects
 - Risk contour 10-6
 - Evacuation distance nuclear e...
 - Evacuation zone
 - Iodine prophylaxis zone
 - Shelter zone
 - Safety distance fireworks
 - Airport zone 1
 - Defence zone
- Accident involving hazardous substances
 - Establishments
 - LPG
 - Storage
 - Ammoniac
 - Railway yard
 - Transport
 - Fireworks
 - Nuclear
 - Defence
 - Other
 - BRZO
 - Site boundary
- Transport
 - Road
 - Rail
 - Water

x:38958 y:383648
0 7000 m

Surface transparency composition

The risk map shows statutory public about risks. [Click here](#) for more information.

*International exchange
of risk information*

