



# EU Cohesion Policy 2014 – 2020

Proposals from the  
European Commission

# EU Cohesion Policy invests in ...

Training

Support  
for SMEs

Energy  
efficiency

Renewable  
energy

Transport

Research  
and innovation

Cooperation  
between regions



# Yet gaps between regions remain

**GDP/capita\***

■ < 50

■ 75-90

■ 100-125

\*index EU27=100

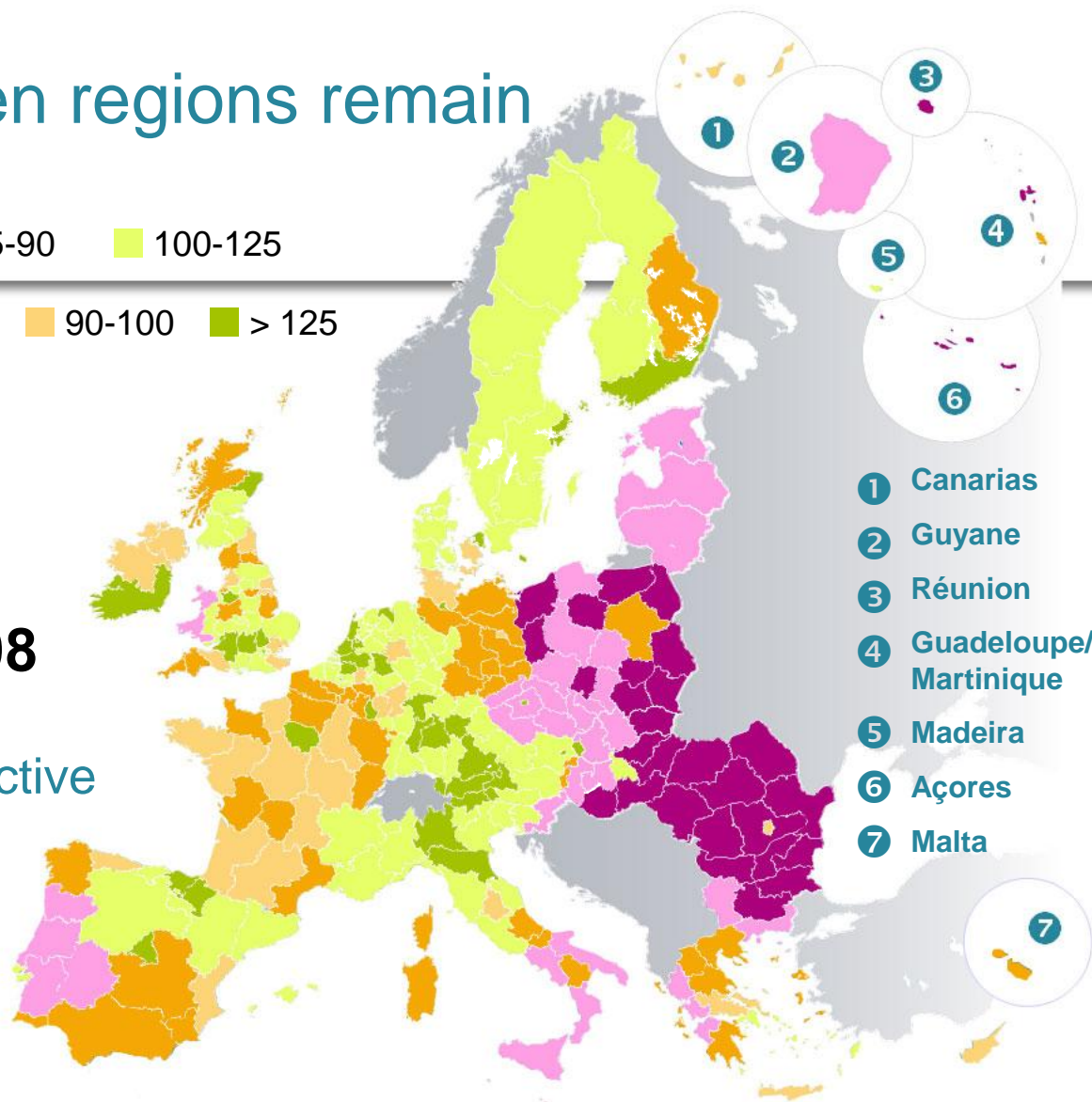
■ 50-75

■ 90-100

■ > 125

**Average  
2006 – 2007 – 2008**

► Closing these gaps  
remains a key objective



Regional GDP figures: 2006-07-08

© EuroGeographics Association for the administrative boundaries

# Objectives

**Deliver the Europe 2020 strategy objectives  
of smart, sustainable and inclusive growth**

**Focus on results**

**Maximise the impact of EU funding**

# Reinforcing effectiveness and performance

## Focus on results

- Common & programme-specific indicators, reporting, monitoring & evaluation

## Performance framework for all programmes

- Clear and measurable milestones and targets

## Performance reserve

- 5 % of national allocations (by Member State, fund and category of region)

## Ex-ante conditionality

- Ensuring conditions for effective investment are in place

## Macro-economic conditionality

- Alignment with new economic governance

# More coherent use of available EU funds



- Comprehensive investment strategy: aligned with Europe 2020 objectives
- Coherence with National Reform Programmes
- Coordination: cohesion policy, rural development, maritime & fisheries funds
- Objectives and indicators to measure progress towards Europe 2020 targets
- Effectiveness: introduction of a performance framework
- Efficiency: reinforcement of administrative capacity, cutting red tape

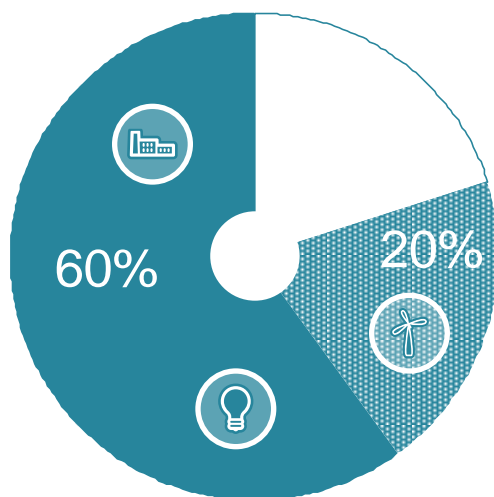
# A menu of thematic objectives

- Research & innovation
- Information and communication technologies (ICT)
- Competitiveness of Small and Medium-sized Enterprises (SMEs)
- Shift towards a low-carbon economy
- Climate change adaptation & risk prevention and management
- Environmental protection & resource efficiency
- Sustainable transport & removing bottlenecks in key network infrastructures
- Employment & supporting labour mobility
- Social inclusion & combating poverty
- Education, skills & lifelong learning
- Institutional capacity building & efficient public administrations

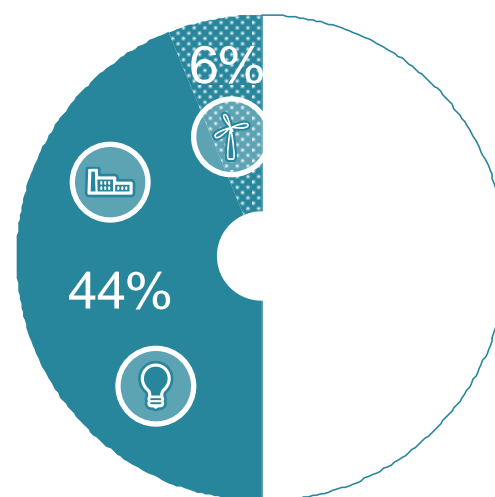
# Concentrating resources to maximise impact

## Concentration of ERDF investments

 Energy efficiency & renewable energy    Research & innovation    Competitiveness of SMEs



More developed & transitional regions



Less developed regions

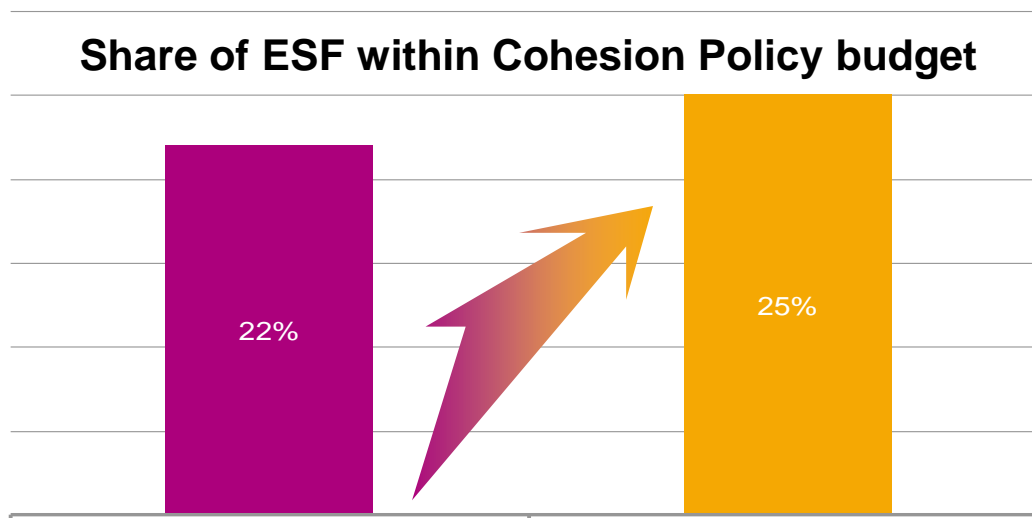
Flexibility – different regions have different needs  
Special arrangements for ex-convergence regions



# European Social Fund (ESF)

■ 2007-2013

■ 2014-2020



**Of total Structural Fund support (ERDF & ESF), ESF will represent:**

- 25 % in less developed regions
- 40 % in transition regions
- 52 % in more developed regions

# European Social Fund (ESF)

## Fully in line with the Europe 2020 strategy

- Promoting employment & supporting labour mobility
- Investing in education, skills & life-long learning
- Promoting social inclusion & combating poverty
- Enhancing institutional capacity & efficient public administration

## Reinforced social dimension

- 20 % of ESF allocations for social inclusion
- Greater emphasis on fighting youth unemployment
- Mainstreaming & specific support for gender equality & non-discrimination

# Cohesion Fund

**Supports Member States with GNI/capita < 90 % of EU27 average**

## **Investing in environment**

- Climate change adaptation and risk prevention
- Water and waste sectors
- Biodiversity including through green infrastructures
- Urban environment
- Low carbon economy

## **Investing in transport**

- Trans-European Transport Networks (TEN-T)
- Low-carbon transport systems and urban transport

# Simplification

## **Common rules - funds covered by Common Strategic Framework**

- Cohesion Policy, rural development and maritime & fisheries policy

## **Option of multi-fund programmes**

- ERDF, ESF and Cohesion Fund

## **Streamlined delivery system**

- Harmonised rules on eligibility and durability
- Greater use of simplified costs
- Linking payments with results
- e-Cohesion: “one stop shop” for beneficiaries
- Proportional approach to control

# Reinforcing Territorial Cohesion

## Increased focus on sustainable urban development

- At least 5 % of ERDF resources
- Based on strategies setting out integrated actions to tackle economic, environmental, climate and social challenges

## Local development

- Possibility to support community -led local development

## Innovative actions for sustainable urban development

- Studies and pilot projects to identify or test new solutions to issues relating to sustainable urban development

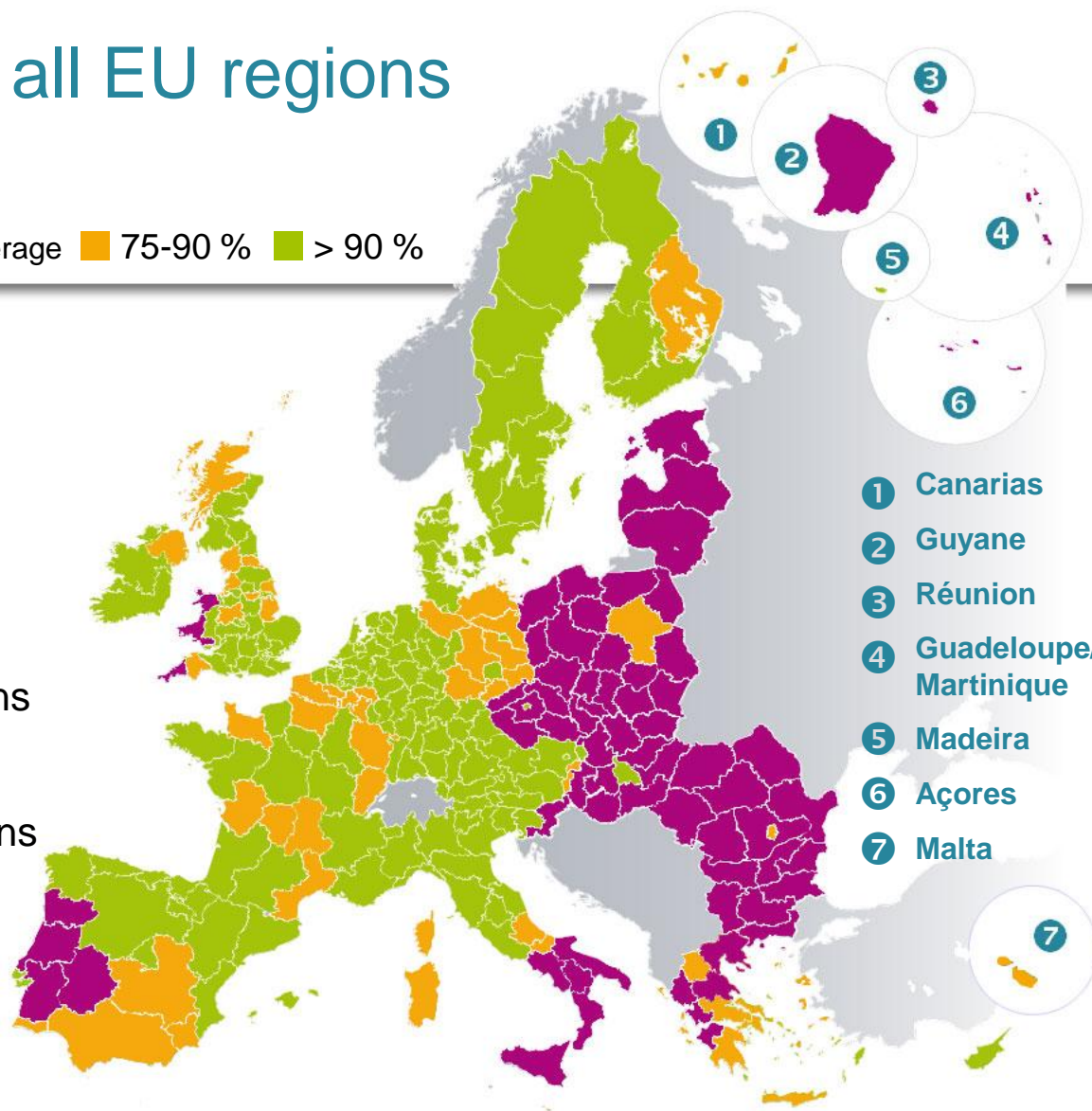
# A fair system for all EU regions (eligibility simulation)

**GDP/capita\*** ■ < 75 % of EU average ■ 75-90 % ■ > 90 %

\*index EU27=100

## 3 categories of regions

- Less developed regions
- Transition regions
- More developed regions



Regional GDP figures: 2006-07-08  
© EuroGeographics Association for the administrative boundaries

# Timeline



# Where can I find further information?

**[www.inforegio.europa.eu](http://www.inforegio.europa.eu)**

**Follow @EU\_Regional on Twitter**